



## MEGDIP MANUFACTURING INDUSTRIES

MANUFACTURER OF INDUSTRIAL FILTERS & HOUSINGS



ISO 9001:2015 CERTIFIED

An ISO 14001:2015 Certified Co. | An ISO 9001:2015 Certified Co. | CE Certified Co.



## Quality & Certifications

**Meghdip Manufacturing Industries** firmly believes that its is the quality of its product that sets the company apart from its competitors across the world. In our enterprise, we follow a strict quality policy to ensure that every Filter housing, Filtration system, SS filter Cartridges Etc delivered to our clients is flawless in quality.

It is owing yo our excellent quality controllers that we are able to win the trust of our quality conscious clients based in india. We inspect each and every stage right the time of procurement of Raw materials till the final packaging and storing of the end product.



### Experience

Meghdip filter have rich experience and expertise in filtration engineering, focusing on various filtration solutions for our clients.



### Technical

We design customized Filtration system for our customers. Which are user friendly (easy to operate).



### Quality

We follow internal & external inspection processes to achieve quality as per ISO guideline and customer requirement.



### Delivery

We are very prominent towards our commitment of delivery, also keep inventories as per consumption pattern.



### Advanced Technology

We have modern infrastructure and equipment to manufacture efficient filtration solutions.



### Team

We have team of more than 50 Members with a motto to satisfy customers by our





# Cartridge Filter Housing



MEGHDIP MANUFACTURING INDUSTRIES

# Bag Filter Housing



MEGHDIP MANUFACTURING INDUSTRIES



## Technical Specifications

### Sizes (Cartridge filter housings suitable for)

- 1 No. To 500 Nos. Of Cartridges in Single Housing
- 2", 2.5", 4", 6" & 8" Diameter of Cartridge
- 10", 20", 30" & 40" Length of cartridge

### Flow Rate

- Capacity: Up to 2000  $m^3/hr$  & more

### Material of Construction

- SS 316L • SS 316 • SS 304 • MILD STEEL
- POLYPROPYLENE on any metal
- RUBBER LINING on any metal
- TEFLON LINING on any metal
- TEFLON coating on metal

### Type Of Fittings (Cartridge)

- Double Open End (DOE) Type
- Code 7 (226 O Ring) Design
- Code 3 (222 O Ring) Design
- NPT Threaded Connection Type

### End connections

- NPT / BSP Threaded
- Flanged Table E / Table F
- ANSI B 16.5 Flanged
- DIN Standard
- Tri Clover Adaptors

### Gasket / O Ring Material

- Neoprene
- Nitrile
- Silicone
- Viton
- EPDM
- PTFE
- Spiral wound

## Technical Specifications

### Sizes Bag filter system suitable for

Diameter in Inch.	Length in Inch.	No. of Bags Per Housing.
Ø 4" Dia.	10" Long	1 No.
Ø 4" Dia.	20" Long	1 No.
Ø 7" Dia.	16" Long	1 No.
Ø 7" Dia.	32" Long	1 No.
Ø 7" Dia.	32" Long	2 No.
Ø 7" Dia.	32" Long	3 No.
Ø 7" Dia.	32" Long	4 No.
Ø 7" Dia.	32" Long	5 No.
Ø 7" Dia.	32" Long	6 No.
Ø 7" Dia.	32" Long	7 No.
Ø 7" Dia.	32" Long	9 No.

### Flow Rate

- Capacity: Up to 2000  $m^3/hr$  & more

### Material of Construction

- SS 316L • SS 316 • SS 304
- MS
- Polypropylene
- RUBBER LINING on any metal

### Gasket / O Ring Material

- Neoprene • Nitrile • Viton
- EPDM • PTFE • Silicone

### End connections available

- NPT / BSP Threaded
- Flanged Table E / Table F
- ANSI B 16.5 Flanged
- DIN Standard
- Tri Clover Adaptors

### Type of fittings (Bag)

- PP Collar Bag
- Snap Band Bag
- SS Ring Bag
- Flange Collar Bag

# Cartridge Filters



MEGH DIP MANUFACTURING INDUSTRIES



MEGH DIP MANUFACTURING INDUSTRIES

## Stainless Steel Filter Cartridge



<b>Diameter</b>	: 2.5", 4" & 4.5"
<b>Internal Diameter</b>	: 28 mm & Customized
<b>Length</b>	: 10", 20", 30", 40" & Customized
<b>Material Of Construction</b>	: SS 304, SS 316 & SS 316L
<b>MOC Of Media</b>	: SS 304/316/L Woven Mesh, 316L Non-Woven Fiber Felt
<b>Type Of Filter Design</b>	: Cylinder & Pleated
<b>Micron Rating</b>	: 0.2, 1, 2, 3, 5, 10, 25, 50, 100
<b>Construction</b>	: 100% Welded & Adhesive
<b>Configuraation</b>	: DOE, SOE, Code 7, NPT & BSP

## SS Sintered Powder Filter Cartridge



<b>Diameter</b>	: 2", 2.5" & 3"
<b>Internal Diameter</b>	: 28 mm, 40, & 50mm
<b>Length</b>	: 10", 20", 30", 40" & Customized
<b>Material Of Construction</b>	: SS 316 & SS 316L
<b>Type Of Filter Design</b>	: Cylinder
<b>Micron Rating</b>	: 0.2, 1, 2, 3, 5, 10, 25, 50, 100
<b>Construction</b>	: 100%
<b>Configuraation</b>	: DOE, SOE, Code 7, NPT & BSP

## Dust Collection Filter Cartridge



<b>Diameter</b>	: 2.5", 4" & 4.5"
<b>Internal Diameter</b>	: 28 mm & Customized
<b>Length</b>	: 10", 20", 30", 40" & Customized
<b>Moc Of Caps</b>	: SS/GI/PP/PU/Rubber
<b>MOC Of Media</b>	: Cellulose Paper, pp, Spun Bonded Polyenster, HDPE, Nylon
<b>Micron Rating</b>	: 0.2, 1, 2, 3, 5, 10, 25, 50, 100
<b>Coating</b>	: PTFE, Antitaatic ( Aluminumoaoating)
<b>Configuraation</b>	: Lungs type, Collar Type, Flage type & Tie -Rod Type Fitting

## PP Pleated Filter Cartridge



## Filter Bags



## CONICAL TYPE SS316/SS304



## BASKET TYPE SS316/SS304

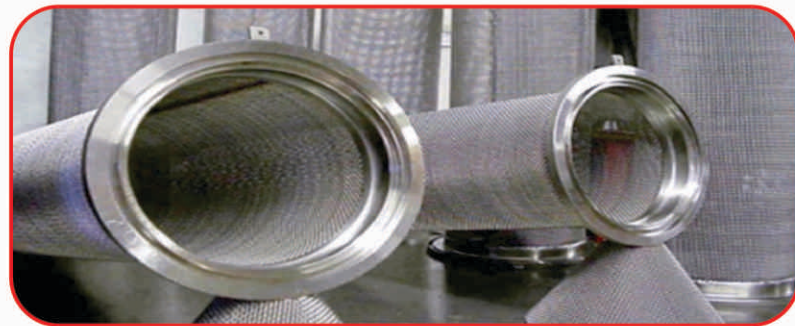




# Cartridge Filters



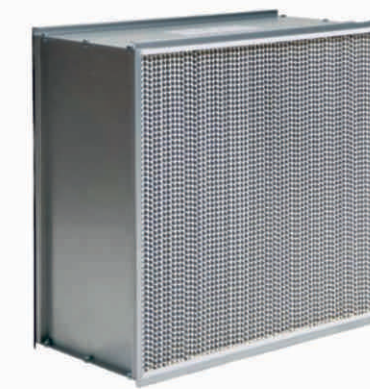
MEGH DIP MANUFACTURING INDUSTRIES



# Panel Filter



MEGH DIP MANUFACTURING INDUSTRIES



## Technical Specifications

### Sizes

- Standard & Customized

### MOC of Frame

- SS 316L • SS 316 • SS 304
- Aluminum
- GI

### Micron Rating

- 0.2, 0.45, 1, 2, 5, 10, 25, 50, 100 & More

### MOC of Media

- PP, Polyester, Synthetic Nylon
- HDPE Mesh
- SS Mesh
- Nylon Mesh

### Type of Filter

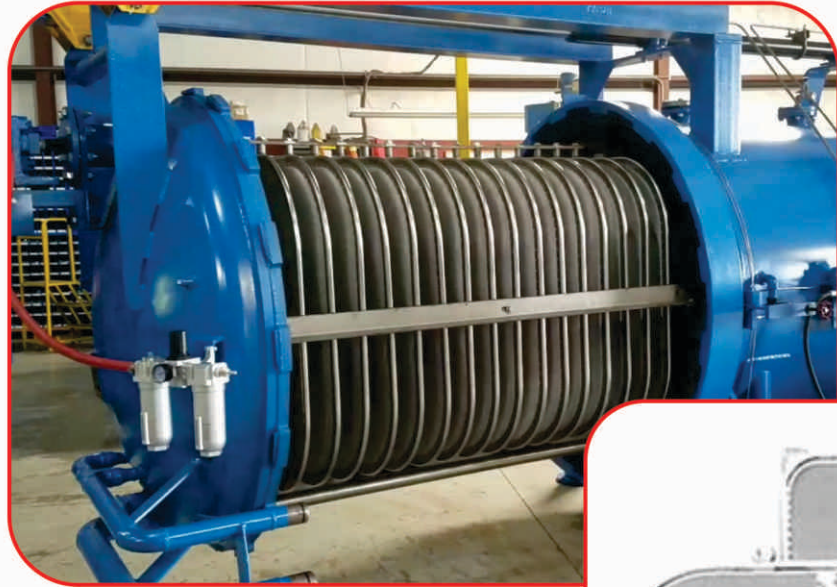
- Hepa Filter
- Pre Filter
- V Cell Filter
- Pocket Filter



# Leaf Filter



MEGH DIP MANUFACTURING INDUSTRIES



## **PRESSURE LEAF FILTER USED IN**

- Edible Oil Industry – Bleached, winterized, Dewaxing, Catalyst, Mineral oil
- Chemical Industry – For Organic and Inorganic salts, dyes, chemical, Plasticizers
- Beverage Industry - For Glucose, fruit Juices, cold drinks ,sugar, Vinegar
- Pharmaceutical Industry-For Pharmaceutical intermediates, syrup, bulk drugs, antibiotics
- Petrochemical industry-Crude oil, LPG, Lubricating oil, Sulphur

## **MATERIAL OF CONSTRUCTION**

Stainless Steel, Carbon Steel, PP with SS304,SS316,SS316L ,904L Monel ,Hastelloy, PTFE, Halar coating and materials as required, 'O' ring sealing are available in Viton , Nitrile, Silicon, etc.

# Candle Filter



MEGH DIP MANUFACTURING INDUSTRIES





# SPARKLER FILTER



MEGH DIP MANUFACTURING INDUSTRIES



# SPARKLER FILTER



MEGH DIP MANUFACTURING INDUSTRIES

## TECHNICAL SPECIFICATIONS

The filter comes with inlet, outlet, pressure guage, bypass, safety valve, sampler, centrifugal pump (with mechanical seal) & SS - Trolley

**Max. working pressure :** 5kg/cm<sup>2</sup>

**Max. working temp.:** upto 100 - 200 °C (depending on filter & sealing )

Model	Plate Dia inches	No. of Plates	Filter Area m <sup>2</sup>	Cake holding cap.ltrs.	Output ltrs./hr.	Pump hp
DDS 806	8	6.	0.20	4.9	600	1.0
DDS 808	8	8	0.26	6.3	700	1.0
DDS 1408	14	8	0.75	22	1500	2.0
DDS 1410	14	10	0.92	27	1800	2.0
DDS 1808	18	8	1.28	45	2800	3.0
DDS 1812	18	12	1.85	76	3500	3.0
DDS 1815	18	15	2.28	88	4000	3.0
DDS 2412	24	12	3.43	104	7000	5.0
DDS 2415	24	15	4.23	128	8000	5.0
DDS 2424	24	24	6.60	200	12000	5.0
DDS 3307	33	7	4	120	12000	5.0
DDS 3310	33	10	5.5	165	15000	5.0
DDS 3314	33	14	7.5	225	18000	5.0



# NUTSCHE FILTER



MEGHDIP MANUFACTURING INDUSTRIES



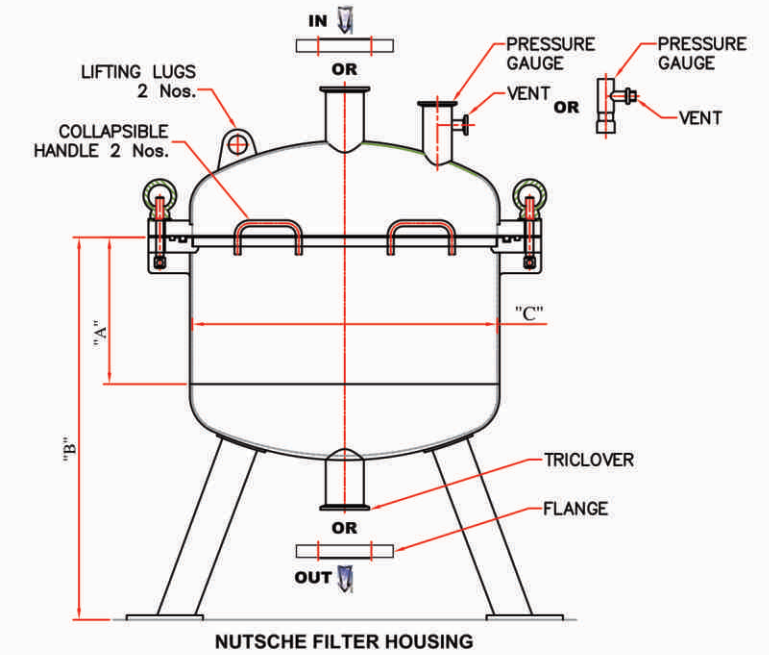
# NUTSCHE FILTER



MEGHDIP MANUFACTURING INDUSTRIES

NUTSCHE FILTER are offered batch filtration technique that uses vacuum /pressure in a closed vessel is mostly used in chemical and pharmaceuticals industries. The system consists of closed vessels with variety of lter media. In this lter solid/liquid slurry is aided by pressurizing the vessels /applying the vacuum. Liquid is passed through the lter and solid is concentrated on lter media i.e. cake is retained on lter medium. Synthetic lter cloth, lter pad or the metallic lter is mostly use as lter media.

This lter is specially designed for solid liquid separation. We offer cleanable, non-bre / particle releasing Sintered SS316L lter discs as a option. This isa major advantage in applications requiring ltration in API / ne chemical. Nutsche lters are designed to facilitate exible discharge.



PART NO.	"A" (IN MM)	"B" (IN MM)	"C" (IN MM) ID	CONNECTION					HOLD UP VOLUME IN LIT.	BOX SIZE IN INCH (LxWxH)
				INLET OUTLET	PRESSURE GAUGE	VENT				
F0001-300PBS	200	545	300	1.5"	1.5"	1/4"	1.5"	1/4"	18	31x24x24
F0001-400PBS	250	670	400	1.5"	1.5"	1/4"	1.5"	1/4"	40	37x27x27
F0001-500PBS	250	680	500	2"	1.5"	1/2"	1.5"	1/2"	64	38x29x29
F0001-550PBS	250	695	550	2"	1.5"	1/2"	1.5"	1/2"	80	41x30x30
F0001-600PBS	250	705	600	2"	1.5"	1/2"	1.5"	1/2"	95	42x33x33
F0001-650PBS	250	715	650	2"	1.5"	1/2"	1.5"	1/2"	115	42x35x35
F0001-800PBS	300	800	800	2"	1.5"	1/2"	1.5"	1/2"	215	46x40x40
F0001-900PBS	350	870	900	2"	1.5"	1/2"	1.5"	1/2"	318	50x44x44
F0001-1000PBS	350	890	1000	2"	1.5"	1/2"	1.5"	1/2"	408	51x48x48



# Client List



MEGH DIP MANUFACTURING INDUSTRIES



**REGISTERED ADDRESS :**

Plot No 3086/14, GIDC Ind. Estate, Near Sri Rang Residency,  
Opp New Lions International School, Ankleshwar GIDC-393002,  
Dist-bharuch, Gujarat.

**FACTORY :**

Plot No 307 to 311/15, Rajat Pharma Compund,  
Near Ramdev Chowkadi, Ankleshwar GIDC - 393002,  
Dist. Bharuch, Gujarat.

**Mob. : 95122 87979**

**Email : inquiry2022@rediffmail.com**



ISO 9001:2015 CERTIFIED